

Overshot Study Group

April/May 2024

Rachel -

Name block done in cross
stitch



Rachel –

Name block woven in using
one tabby and double
pattern over 4 threads



Chelsy –

Star of Bethlehem from A
Handweaver's Pattern Book
by Davison

Warp & tabby –
10/2 perle cotton

Pattern weft –
3/2 perle cotton

Treadled as drawn in



Chelsy –

Star of Bethlehem – Treadled by
doubling block C



Linda – Whig Rose pattern

Top – Woven in Rose fashion

Pale blue weft – Quilt Squares treading

Pink – Doubled the length of each block

Pale green – Elongated Block C (treadled 1 & 2 four times)

Black – Treadled using the Diamond treading in Vicki's handout

Bottom – Whig Rose – treadled as drawn in



Whig Rose woven in Rose fashion

Woven as drawn in - Quilt Squares treading on Whig Rose Heading

Doubled the length of each block

Elongate one of the blocks - Elongated Block C (treadled 1 & 2) 4x original treading

Treadled using Vicki's Diamond treading in handout

Overshot Variations Workshop - Vicki Tandy - Whig Rose - treadled as drawn in

Linda – Whig Rose pattern

Top – Woven as brocade in 3/2 perle cotton

Brown weft – Woven as swivel

Pale blue – Woven as petit Point – 3rd treading

Pale turquoise – Woven as Petit Point – 2nd treading

Green – Woven as Petit Point – 1st treading

Bottom – Woven in Scandinavian Manner



“Overshot Patterns in Color-and-Weave-Effect Double Weave”

Handwoven, Jan/Feb 1994,
p. 62 – 65.

Fabric woven from 12/2 worsted wool
(Halcyon’s Featherlight Merino)
sett at 32 epi (16 epi per layer).

*With an interplay
of light and dark
patterning,
overshot designs can be
woven as double weave
on only four shafts.*



Manuela Kaulitz used four-shaft color-and-weave double weave to achieve a delicate interpretation of traditional overshot in her Kentucky-Kyoto Vest. The vest reverses from dramatic black on one side to cheerful red on the other. The seams are covered with matching handwoven tape, and all edges are wrapped with bias tape woven from the same yarn in tubular double weave and cut in a spiral. Details are provided in the Instruction Supplement. Yarn courtesy of Halcyon Yarn.

“Mug rugs”

Weaver's, Issue 40,
Summer 1998, p. 40 – 41.

Woven in 10/2 cotton sett at
40 epi (20 epi per layer) and
threaded 4 ends/dent in a 10
dent reed.





WEAVER'S PROJECT

Drafts for mug rugs woven in double-weave overshoot

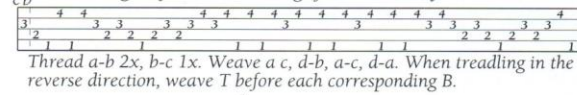
Weaver's, Issue 40, Summer 1998, p. 40 – 41.

Tired of those samples that hide in your notebooks? Thread a narrow warp and play with treading variations and color orders for many different effects.

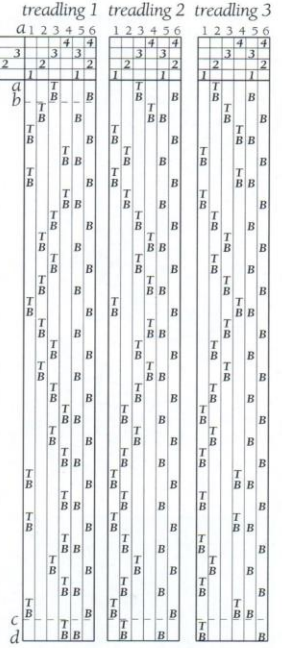
BY JUDIE EATOUGH

1. Draft for mug rugs

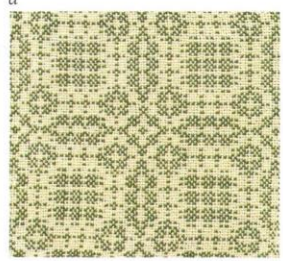
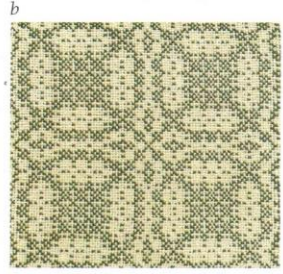
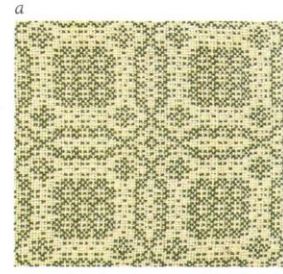
Threading draft shows threading of dark ends only.



Thread a-b 2x, b-c 1x. Weave a c, d-b, a-c, d-a. When treading in the reverse direction, weave T before each corresponding B.



T = top layer; B = bottom layer.



Use the overshoot draft in Figure 1 or choose one of your own. To see how a design will look in double weave, enter the overshoot threading in a computer weaving program, enter a direct tie-up, and choose 'as-drawn-in' for the treading. A warp drawdown shows the effect of a light weft in the top layer; a weft drawdown shows the effect of a dark weft.

- Equipment. 4-shaft loom, 6" weaving width; 10-dent reed; 1 or 2 shuttles.
- Materials. 10/2 cotton (4200 yds/lb,

UKI), green (Mountain #98) 2 oz, natural (#79) 3 oz.

- Wind a warp of 202 ends (101 ends each color) 2½ yds long, holding 1 end green, 1 end natural separated by the index finger.
- Sley 4 ends/dent in a 10-dent reed, 40 epi; center for 5".
- Thread green ends as shown in Figure 1; after every green (D) end thread a natural (L) end on the opposite shaft (1D3L, 2D4L, 3D1L, 4D2L).
- Weave mats following treading drafts 1, 2

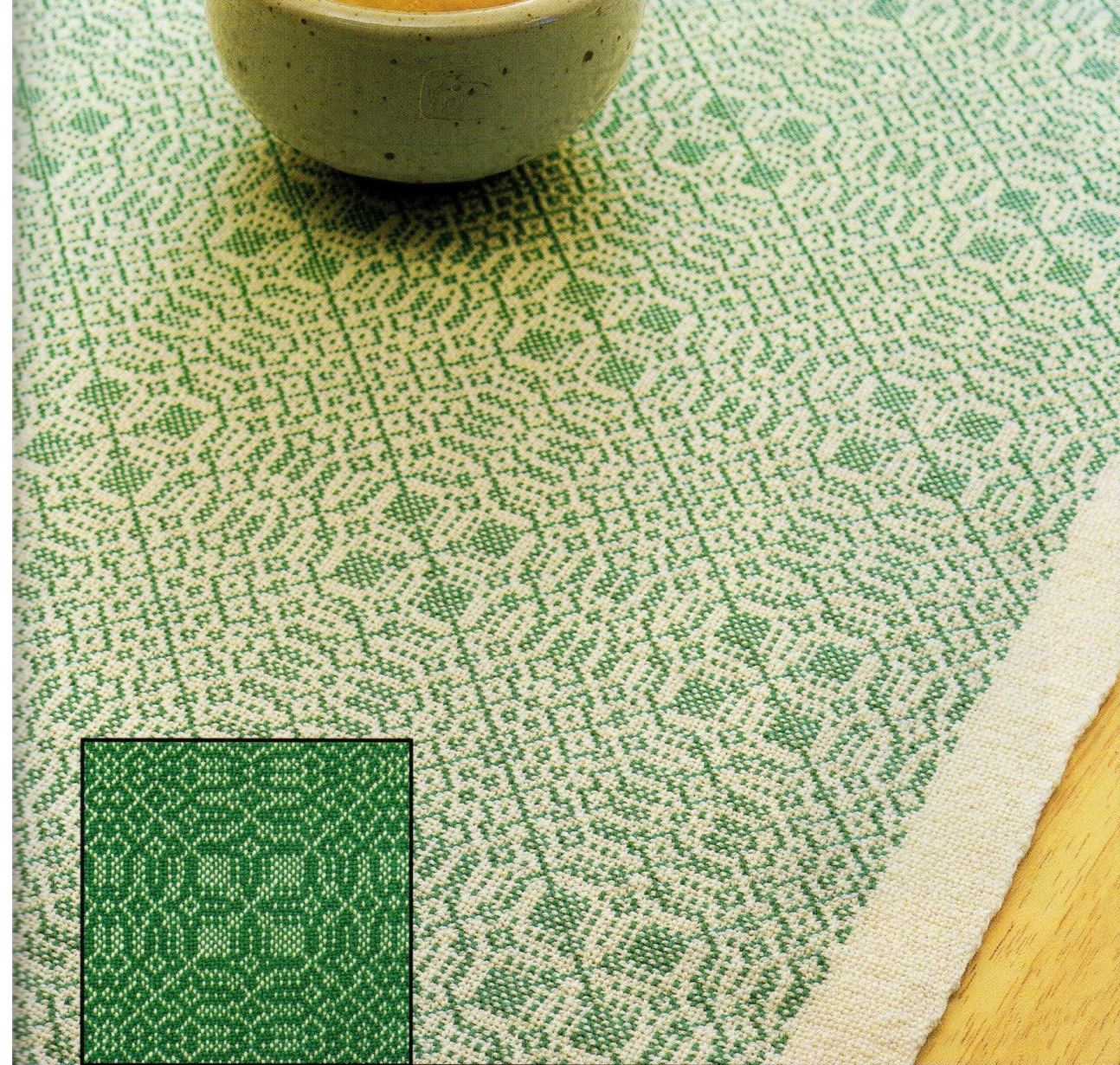
and/or 3 using: 1 shuttle with natural weft (for mostly natural-colored mats), 1 shuttle with green weft for mostly green mats, and/or 1 shuttle with green (top layer) and 1 shuttle with natural (bottom layer) for mostly green-on-top, natural-on-bottom mats. Begin and end each mat with a 1" tubular section for turned-in hems using 1 shuttle with natural: 1, 124, 2, 123.

- Finish by removing from loom. Cut apart mats. Turn ends of hems to inside and slip stitch. Press firmly. ☞

“Shamrock Runners”

Weaver's, Issue 40, Summer 1998,
p. 38 – 39.

Woven in 10/2 pearl cotton sett at
40 epi (20 epi per layer) and
threaded 4 ends/dent in a 10 dent
reed.



One of Bobbie Irwin's runners shows a dark side and a light side, the other is light on both sides; one is fringed and one is hemmed. Choose your favorite combinations or weave them both! Follow Bobbie's directions for the Shamrock runners or choose a favorite overshot draft to convert to double weave.

Double-Faced Overshot

by Charles A. Lermond



This Double-Faced Overshot Placemat and Napkin set was designed by Charles Lermond and woven by Ardis Dobrovolny. Complete instructions are in the Instruction Supplement.

Double-faced twills make it possible to put a different design or color on each side of a fabric.

MANY WEAVERS HAVE made placemats and other articles using overshot patterns in either a border or an overshot design. How many have wished they could put a different design or color on the other side of the fabric? This can be done easily with many overshot patterns, using only a four-shaft loom, by weaving double-faced twills.

To develop this technique for weaving double-faced overshot, I have used a simple version of the pattern called "honeysuckle". The front and reverse of a border woven with this threading using traditional 2/2 twill treadling are exact negative images of one another (figure 1). There are no pattern yarns showing on the reverse of the fabric in those areas where they show on the face.

The design can be woven as a 3/1 twill (figure 2—see page 66). The face of the fabric shows spots of color where the weft yarns cross the warps corresponding to that shaft. The reverse side, a 1/3 twill, shows color everywhere except for these tie-down spots and resembles very closely the upper (back) border of figure 1. It is this side of the fabric which we will explore as a means of weaving our double-faced placemats or other overshot fabric.

Overshot patterns are normally woven as 2/2 twills. The shafts are lifted in pairs: 1-2, 2-3, 3-4, 4-1. If we substitute shafts 1, 2, 3, 4 for the pairs of shafts and then follow the

“Double-Faced Overshot “

Handwoven, Nov/Dec 1989,
p. 64-66.

Warp is 6/2 unmercerized cotton sett at
15 epi.

Weft for hem turn under - 20/2
mercerized cotton.

Weft for hem section - 10/2 mercerized
cotton.

Weft for plain section of placemats -
3/2 mercerized cotton.

Pattern weft – 2-ply linen/rayon
weighing 1200yd/lb, or similar to 3/2
mercerized cotton.