

Overshot Study Group

February 2024

Leslie

Monk's Belt - Variations a & b

Warp – 10/2 Ecrú

Weft 5/2 Turquoise

Sett 24 epi



January 10, 2024 9:57 AM

Leslie

Bronson Lace



January 10, 2024 10:20 AM

Leslie

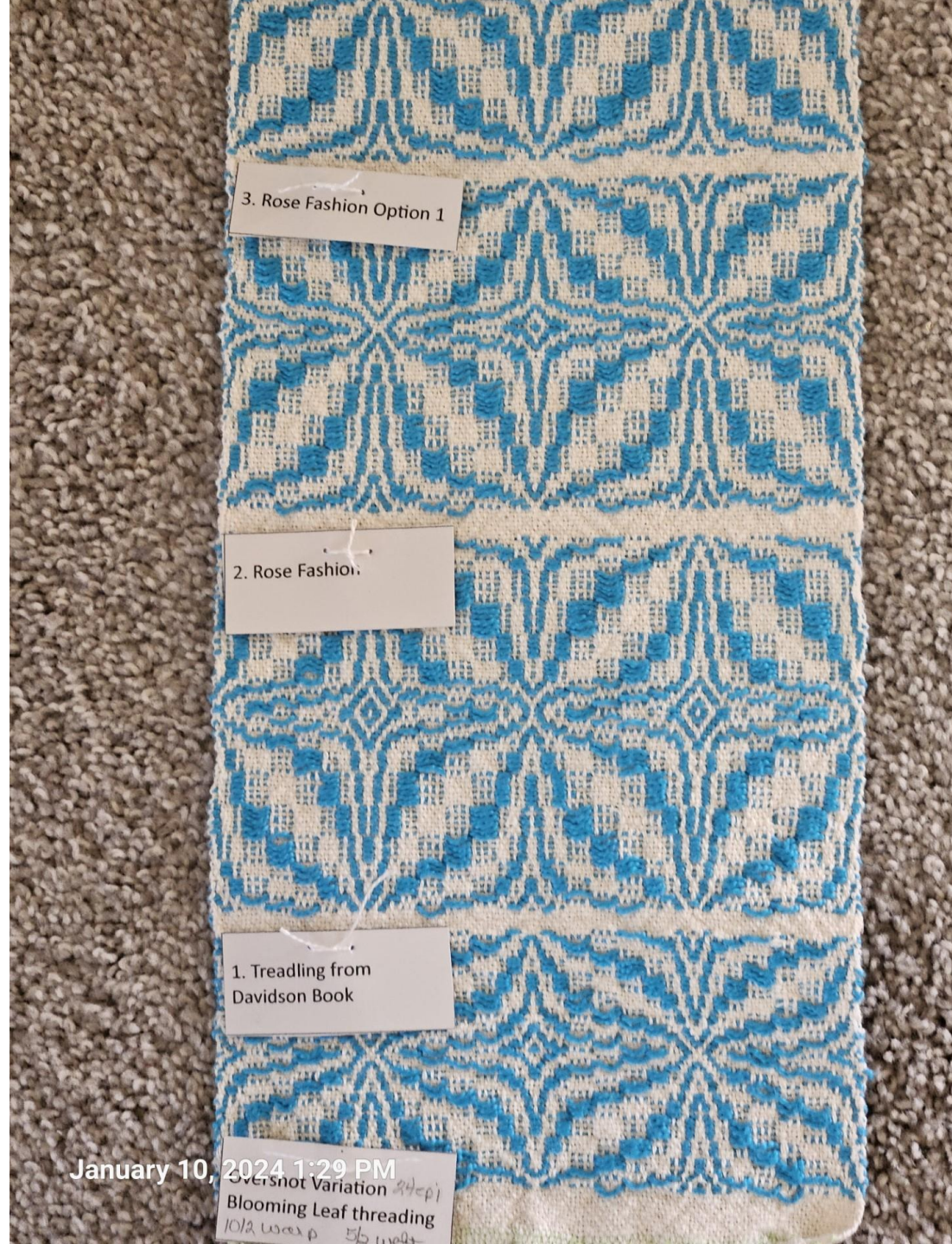
Finished Sampler



January 10, 2024 1:28 PM

Leslie

Closeup showing labeling



January 10, 2024 1:29 PM
Overshot Variation 24ep1
10/2 waa p 55 waa p

Leslie

Bread bag woven in 8/2 cotton
(warp and weft)

Pattern is Vilma Yatter # 2



February 05, 2024 11:02 AM

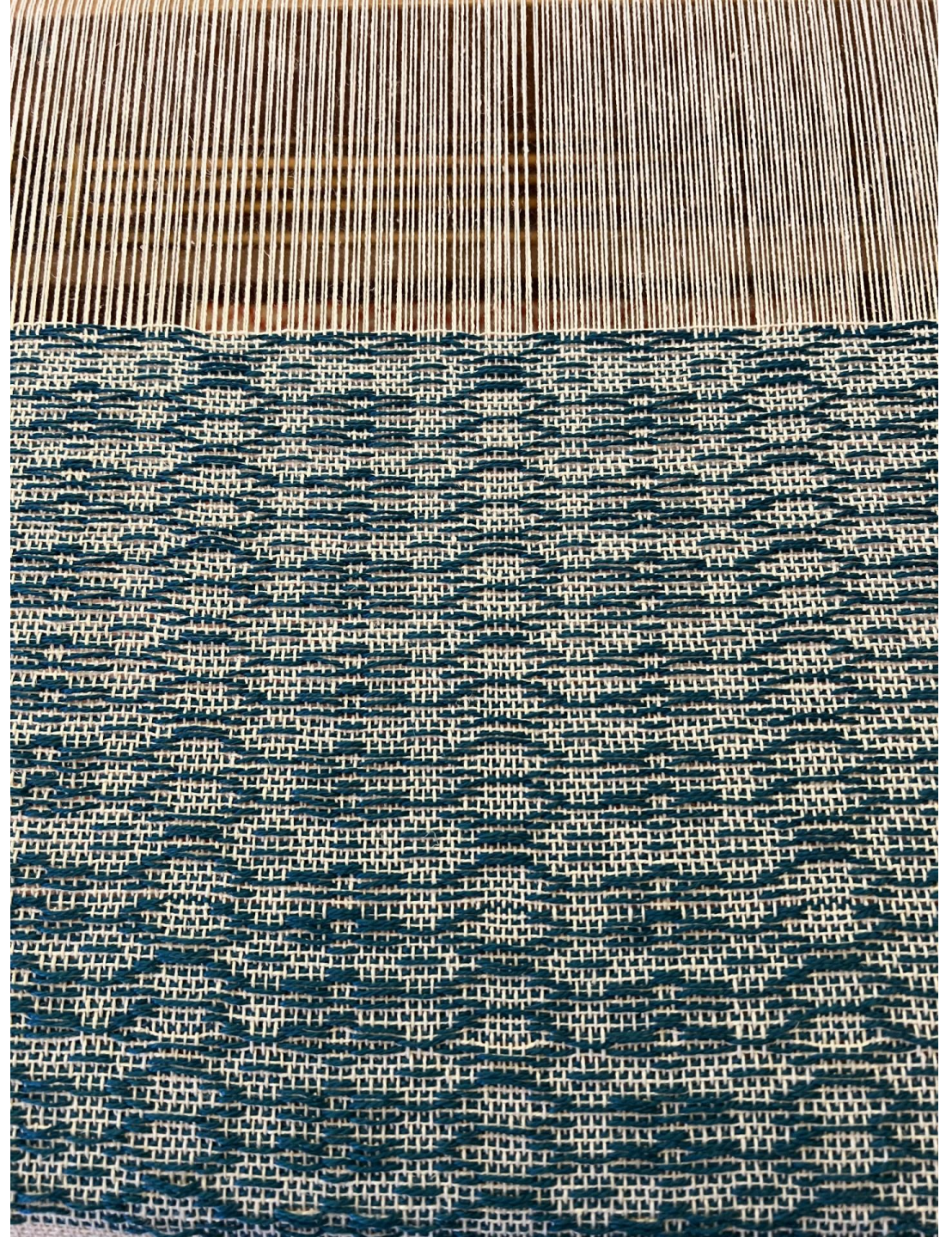
Mary

Primrose in Diamonds pattern

Warp – 22/2 cottolin sett at 16 epi

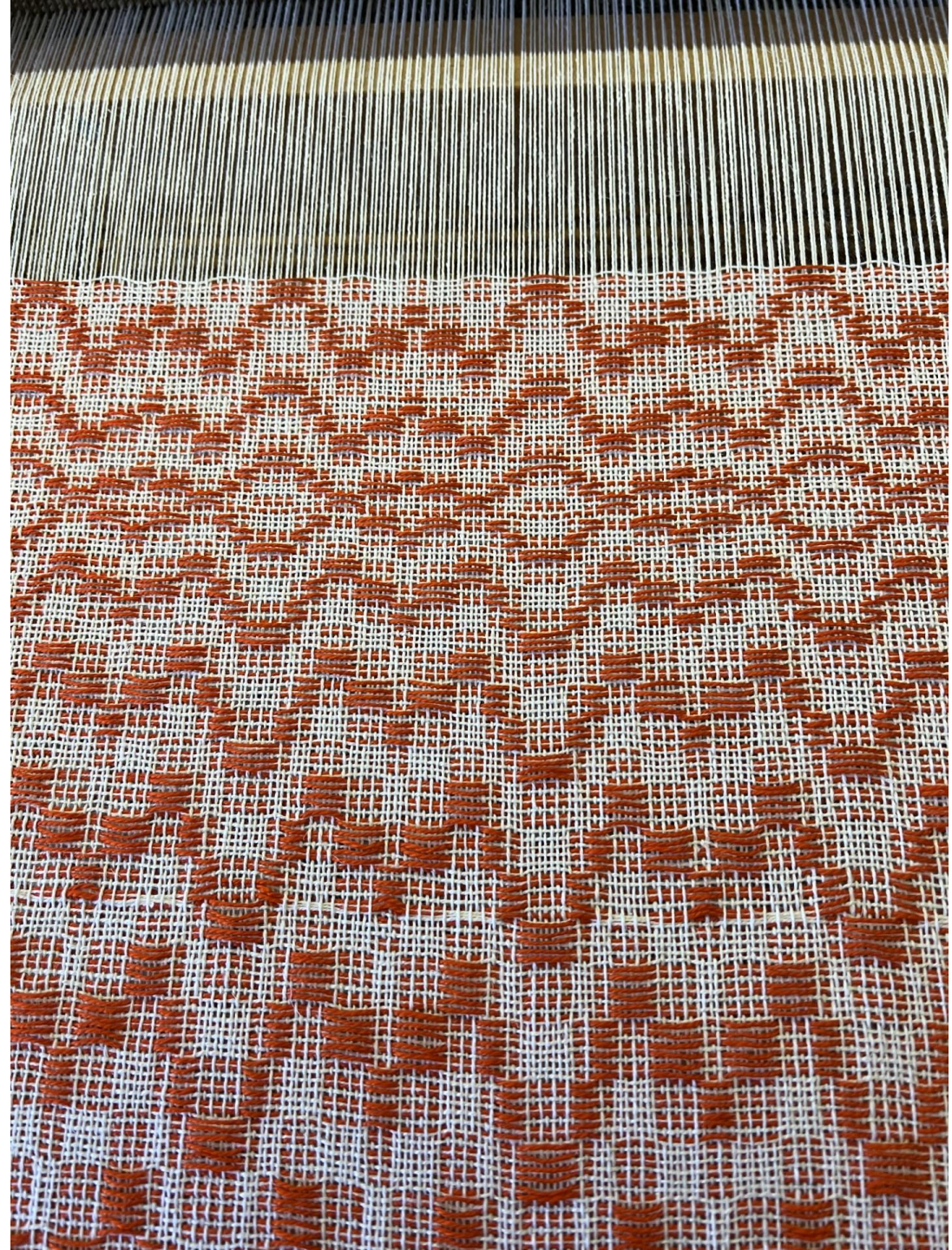
Weft – 5/2 mercerized cotton

Towel woven as Crackle



Mary

Towel woven in Sunburst pattern



Mary

Towel woven in Summer & Winter



Sue

10/2 cotton warp, navy

5/2 cotton pattern weft, white

Treadled as twill with reverse
treadling done two times each for
CDABADC making the round
snowball shapes.

Through the warp, you can see the
backside of the Sunburst treadling.



Carolyn

Handpainted 10/2 tencel warp
from Just Our Yarn.

Pattern – Jitterbug from Bertha
Grey Hayes book.

First scarf (far right) –
Pattern weft is light blue 10/2
tencel. Tabby weft is red
cashmere with a bit of sparkle.

Second scarf (near right) –
Pattern weft is light green 10/2
tencel. Tabby weft is a
variegated cashmere.

The cashmere in both scarves is
a little thicker than the tencel,
making the tabby weft a little
thicker than the pattern weft.

