

Overshot
woven as
Double Weave

What is it?

Overshot woven as double weave is any overshot pattern woven with two plain weave surfaces.

Overshot is a four shaft weave, there will be two shafts used in the top layer and two shafts used in the bottom layer.

To weave double weave lift half the threads in the top layer and pass your shuttle through, then lift both shafts in the top layer and half the bottom layer threads, a total of 3 shafts, and pass your shuttle through.

Using a color-and-weave effect gives you a different color on the top and bottom. It is done by alternating colors in the warp and weft.

This is not a block weave, each of the original pattern threads is woven individually.

Throw – pattern is Small Single Snowball from Josephine Estes Miniature Overshot Pattern page 17 colors dark teal and light aqua

Front Side



Back side



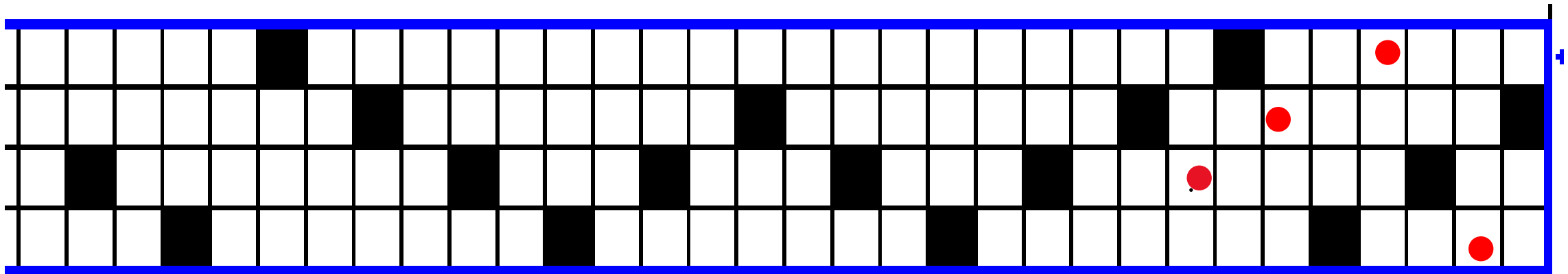
Second, fill in the opposite shaft of each end in the blank space

The opposite of shaft 1 is 3

The opposite of shaft 2 is 4

The opposite of shaft 3 is 1

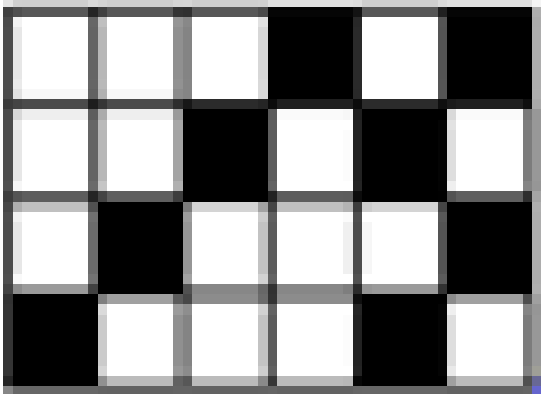
The opposite of shaft 4 is 2



The original draft (black) will be the top layer of your weaving and the red will be the bottom layer.

Tie-Up

Tie-up for 6 treadles



Tie-Up for 8 treadles

	4				4	4	4
			3	3	3		3
	2	2	2		2		
1	1		1				1

Yarn

Any size yarn that is appropriate for your project will work. Remember that this is double weave so the finished product will be twice as thick as using a single strand of the yarn

Choose two colors that have different values, a light and a dark

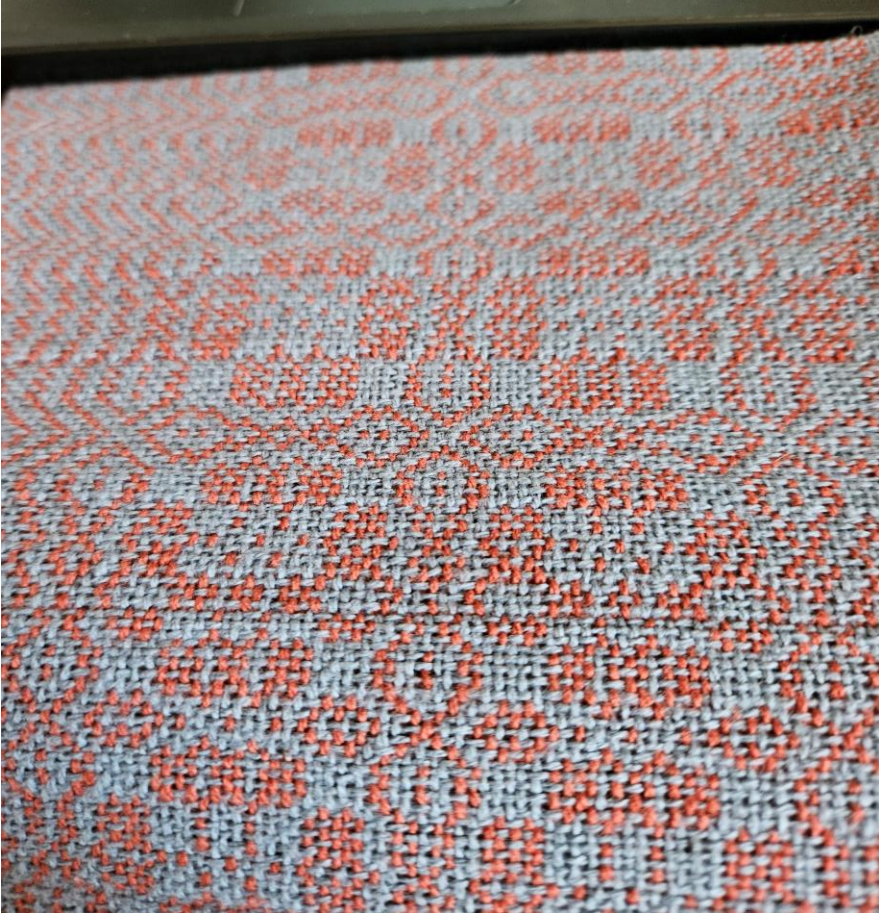
Colors that are too close in value will not show the design and will look muddy

Weft colors do not need to be the same as the warp colors

Pillow – Orange Peel from Estes page26
color - blue and rose



This was going to be a table runner – Pattern is Whig Rose from Estes page 19
color – red and blue gray



Throw – Orange Peel from Estes page26

Warp was cranberry and pink, Weft was navy and peach



How do I weave this?

- This is woven as drawn in using the original pattern.
- Decide which color you will use for the top layer, either dark or light.
- The top layer will weave the original pattern, say it will be dark color. Lift the shaft that is the first thread on the draft.
- The bottom layer, light color in this case, will raise three shafts: the one you just used plus the opposite tabby pair.
 - If the first end is on shaft 1, lift shaft 1 and weave a dark pick
 - Then lift shaft 1 and the opposite tabby, which will be 2 and 4 and weave a light pick
 - Continue with the dark light sequence following the threading of your draft